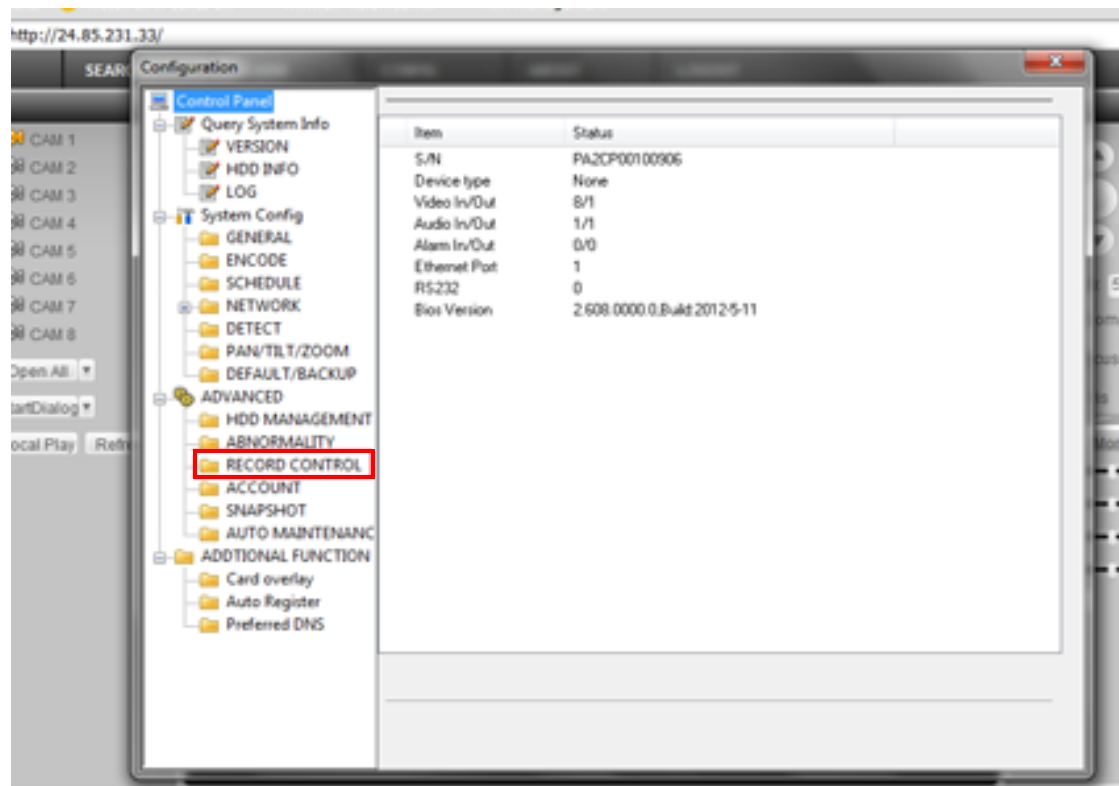




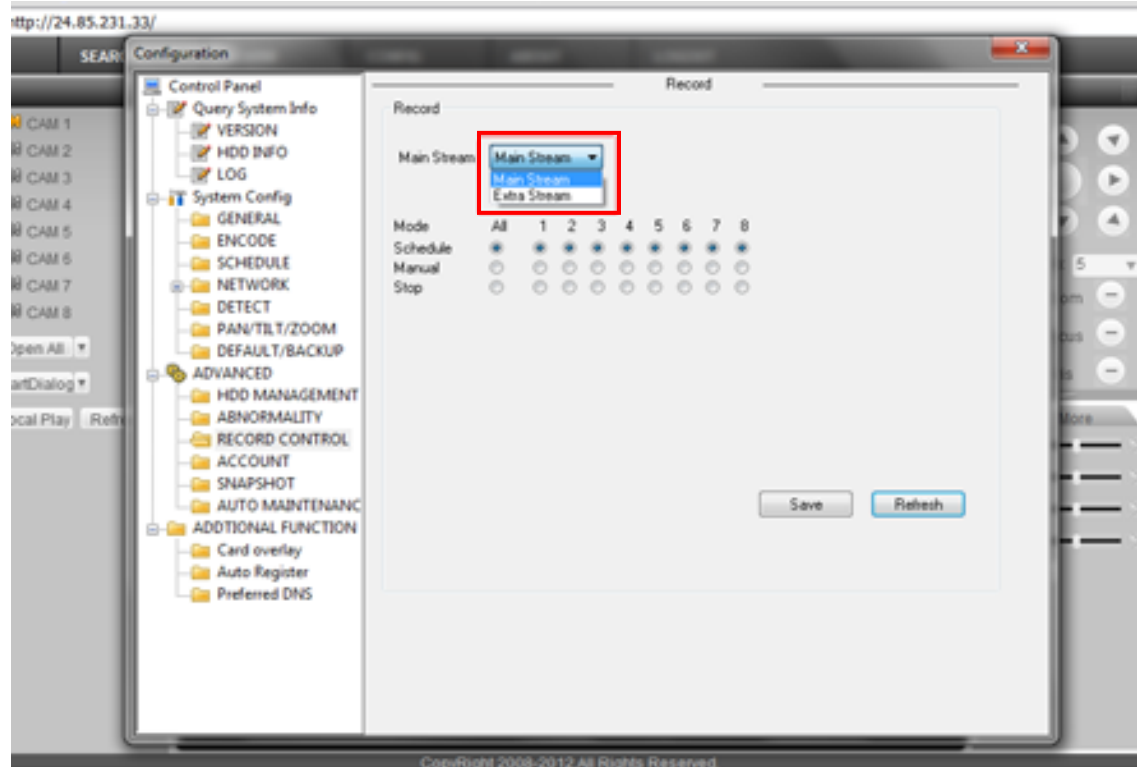
CONFIGURATION TUTORIALS





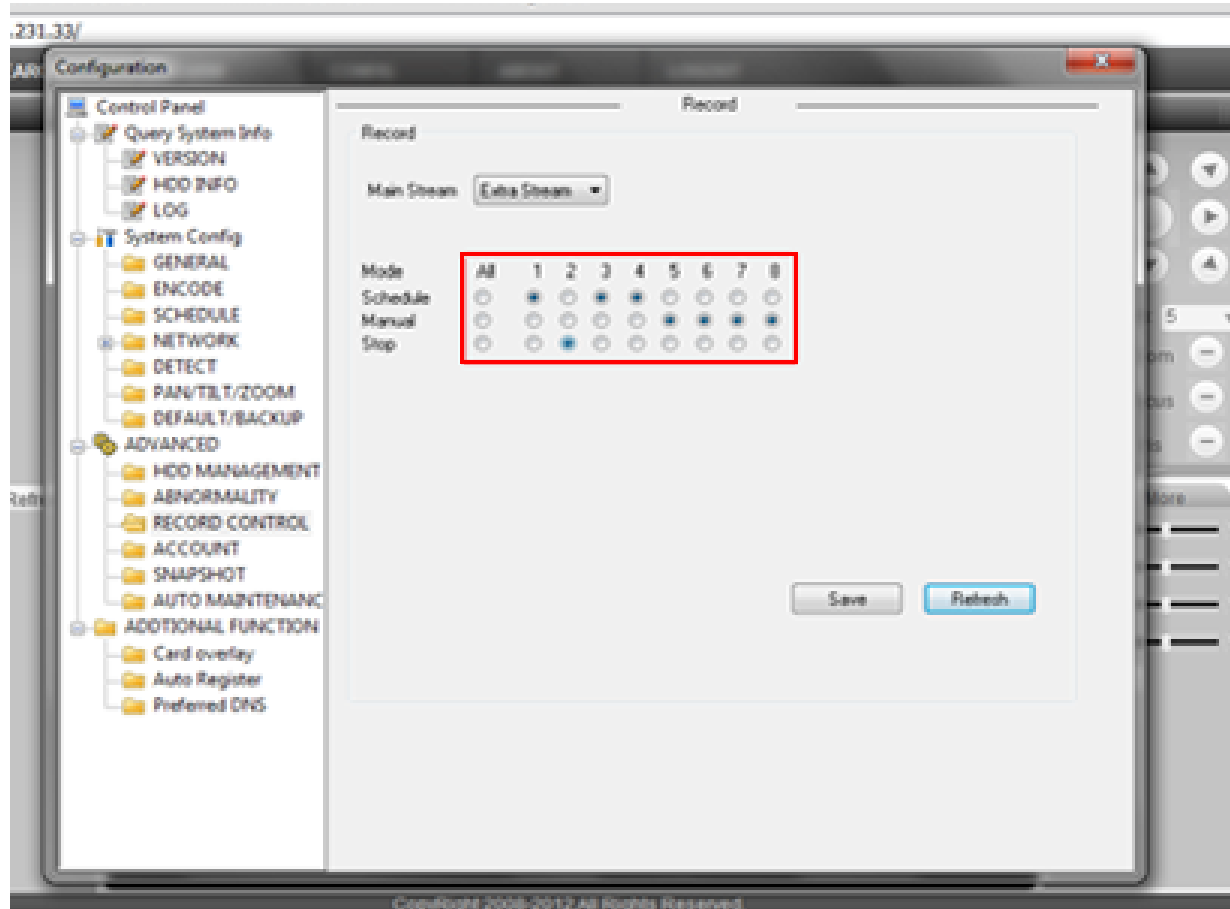
First you click on the config button at the top of the page.

Next after the config has opened, find Record Control on the left-hand side.



Next after you have opened the Record Control, locate the dropdown box and select extra stream.

-Next page-



After you have selected extra stream in the drop down box, set up the channels that you want to record the extra stream for by filling the corresponding bubbles to how you want the stream to record. Either by a schedule, manually, or stopped. After you have set up the channels, click save.